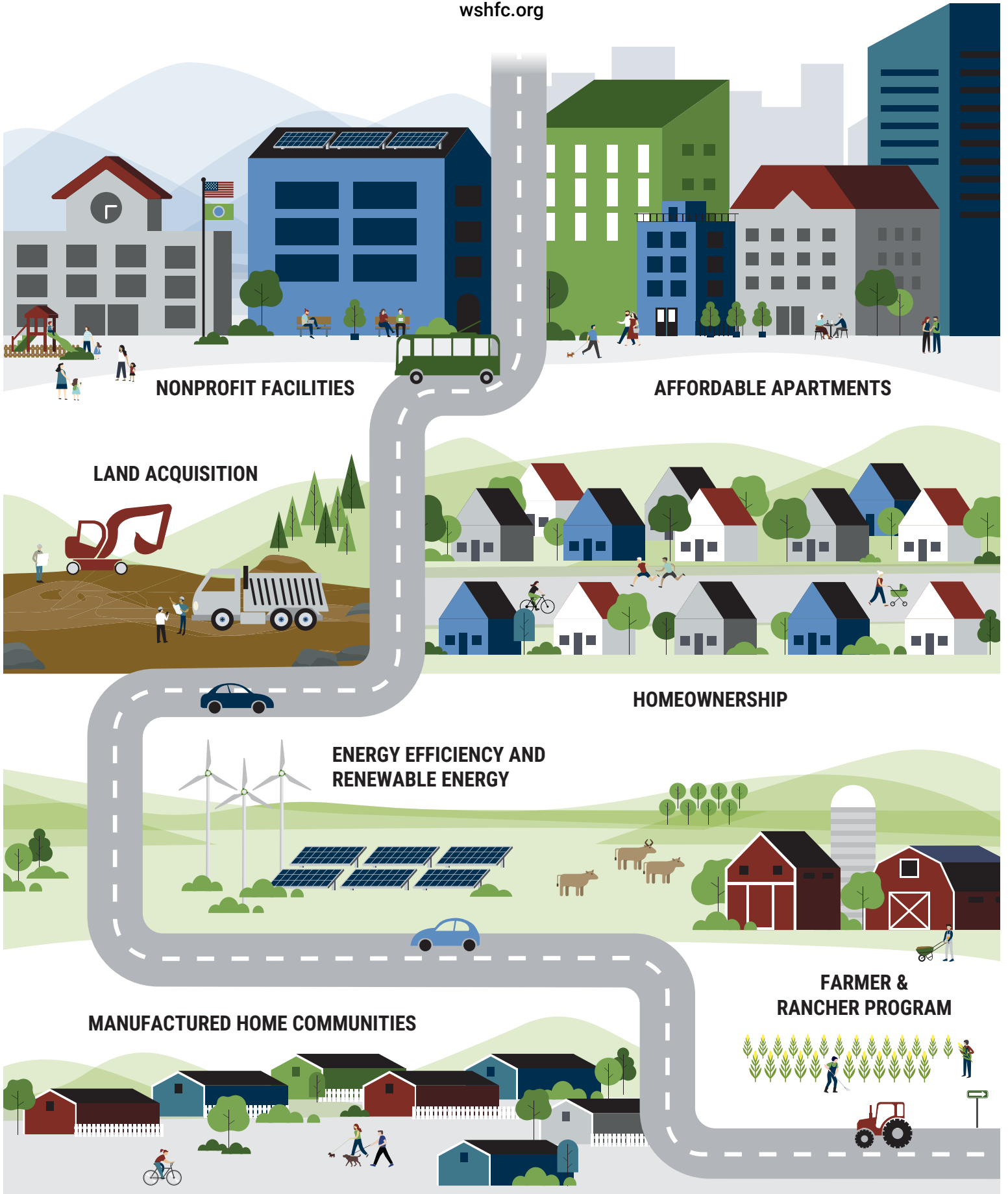


# WASHINGTON STATE HOUSING FINANCE COMMISSION

Journey through the WSHFC community to learn how we can help you identify financing solutions for your goals.  
[wshfc.org](http://wshfc.org)



# WASHINGTON STATE HOUSING FINANCE COMMISSION

The Washington State Housing Finance Commission is a state agency that has financed affordable housing in Washington state for more than 40 years. We help homebuyers with loans and downpayment assistance; developers with financing to build affordable apartments; renters with connections and resources; and community organizations with access to capital to fulfill their missions. *Visit [wshfc.org](http://wshfc.org) to learn more.*



## HOMEOWNERSHIP

VISIT [heretohome.org](http://heretohome.org)

**HOMEBUYERS** Take a free homebuyer class or connect with a lender to see if you qualify for a home loan with downpayment assistance.

**HOMEOWNERS** Struggling to pay your mortgage or facing foreclosure? Call the Homeownership Hotline at 877-894-4663.

**COMMUNITY ORGANIZATIONS** Partner with us to inform and refer your community members.

CONTACT [info@heretohome.org](mailto:info@heretohome.org)



## AFFORDABLE APARTMENTS

**HOUSING DEVELOPERS** Financing to build and preserve affordable apartments

**COMMUNITY ORGANIZATIONS** Connections to housing developers or financing to develop housing yourself

**RENTERS** Information and resources to find and keep an affordable apartment or even get on the path to homeownership

CONTACT [askumhcf@wshfc.org](mailto:askumhcf@wshfc.org)



## NONPROFIT FACILITIES

VISIT [wshfc.org/facilities](http://wshfc.org/facilities)

**NONPROFIT ORGANIZATIONS** Buy, build, renovate, and refinance facilities and equipment through our bond financing.

CONTACT [askumhcf@wshfc.org](mailto:askumhcf@wshfc.org)



## MANUFACTURED HOME COMMUNITIES

**MOBILE HOME PARK RESIDENTS** Become a resident-owned community by forming a cooperative and purchasing the land under your homes with loans from WSHFC.

CONTACT [askumhcf@wshfc.org](mailto:askumhcf@wshfc.org)



## FARMER AND RANCHER PROGRAM

VISIT [wshfc.org/farmranch](http://wshfc.org/farmranch)

**FARMERS AND RANCHERS** Access affordable loans to purchase equipment and farmland.

CONTACT [askumhcf@wshfc.org](mailto:askumhcf@wshfc.org)



## LAND ACQUISITION

**DEVELOPERS** Buy land now for later development of housing and other community assets through our land banking program.

CONTACT [askumhcf@wshfc.org](mailto:askumhcf@wshfc.org)

## ENERGY EFFICIENCY AND RENEWABLE ENERGY



VISIT [wshfc.org/energy](http://wshfc.org/energy)

The *Sustainable Energy Trust* finances projects that switch to clean energy or improve energy efficiency in multifamily housing and other buildings.

CONTACT [energy@wshfc.org](mailto:energy@wshfc.org)



WASHINGTON STATE  
HOUSING FINANCE  
COMMISSION

